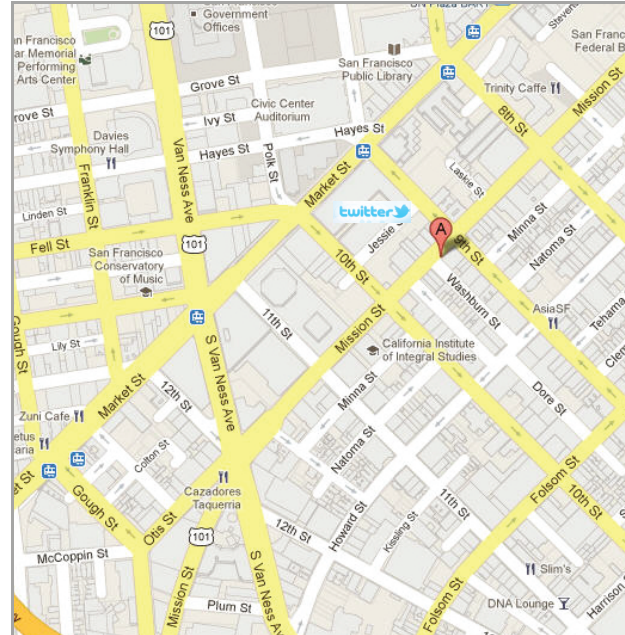


The **SmartSpace® SoMa** neighborhood:

- **Shopping:** Harvest Urban Market, Westfield Shopping Center, Whole Foods, Fox Plaza Shopping Center, Market Square
- **Parks:** UN Plaza, Yerba Buena Gardens, Howard & Langton Mini-Park, Victoria Manalo Draves Park
- **Restaurants & Cafes:** Little Giddle, Market Street Grill, Ma'velous, Starbucks, Café Mine, Rocco's Café, Bossa Nova, Trinity Café, Asia SF, SideBar Wine Tavern
- **Of Note:** Warfield Theater, Orpheum Theater, SF Public Library, Zeum Museum, Moscone Center, SF Federal Building



## GREEN FEATURES

Natural light and ventilation  
Solar thermal water heating  
LED and CFL lighting  
Low-flow plumbing fixtures  
Low VOC finishes

Energy Star appliances  
Storm water management  
Recycled content materials  
High density urban infill development  
Walker's Paradise (Walkscore® of 95/100)



CREATORS OF:  
**SMARTSPACE®**

[smartspace.net](http://smartspace.net)  
510.883.9000

1321 Mission Street ▪ SoMa ▪ San Francisco

# Interiors

- Bay windows
- 300+ cubic ft. of storage in each unit
- Banquette seating area
- 9.5 ft. ceilings



## Kitchen/Bathroom

- Caesarstone countertop
- Stainless steel appliances
- Polished concrete floors
- Extra-deep soaking bathtubs

# Amenities

- Rooftop deck
- Grand lobby/common area
- Café/Deli on the premises
- City CarShare onsite
- Bike storage



# Floor Plans

The floor plans include: The **Solo** – a studio with a convertible bed/ table; the **Duo** – a studio with two twin beds; and the **Suite** – a 3 bedroom apartment with up to five twin beds.



The **Solo** with a queen bed



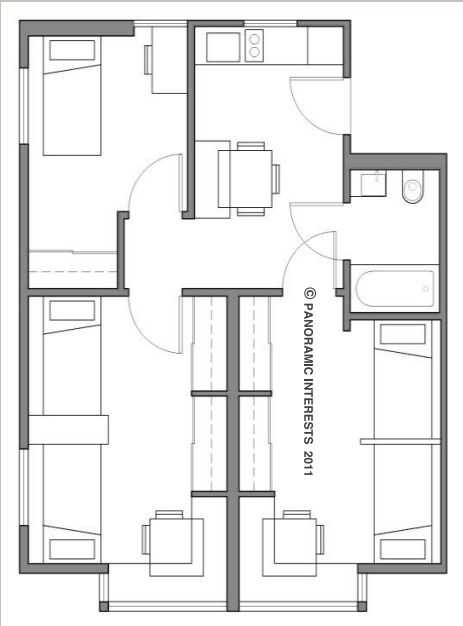
...switched to dining table



The **Duo**: two twin beds



The **Suite**: 3 bedrooms & 5 twin beds



The **Suite** floor plan