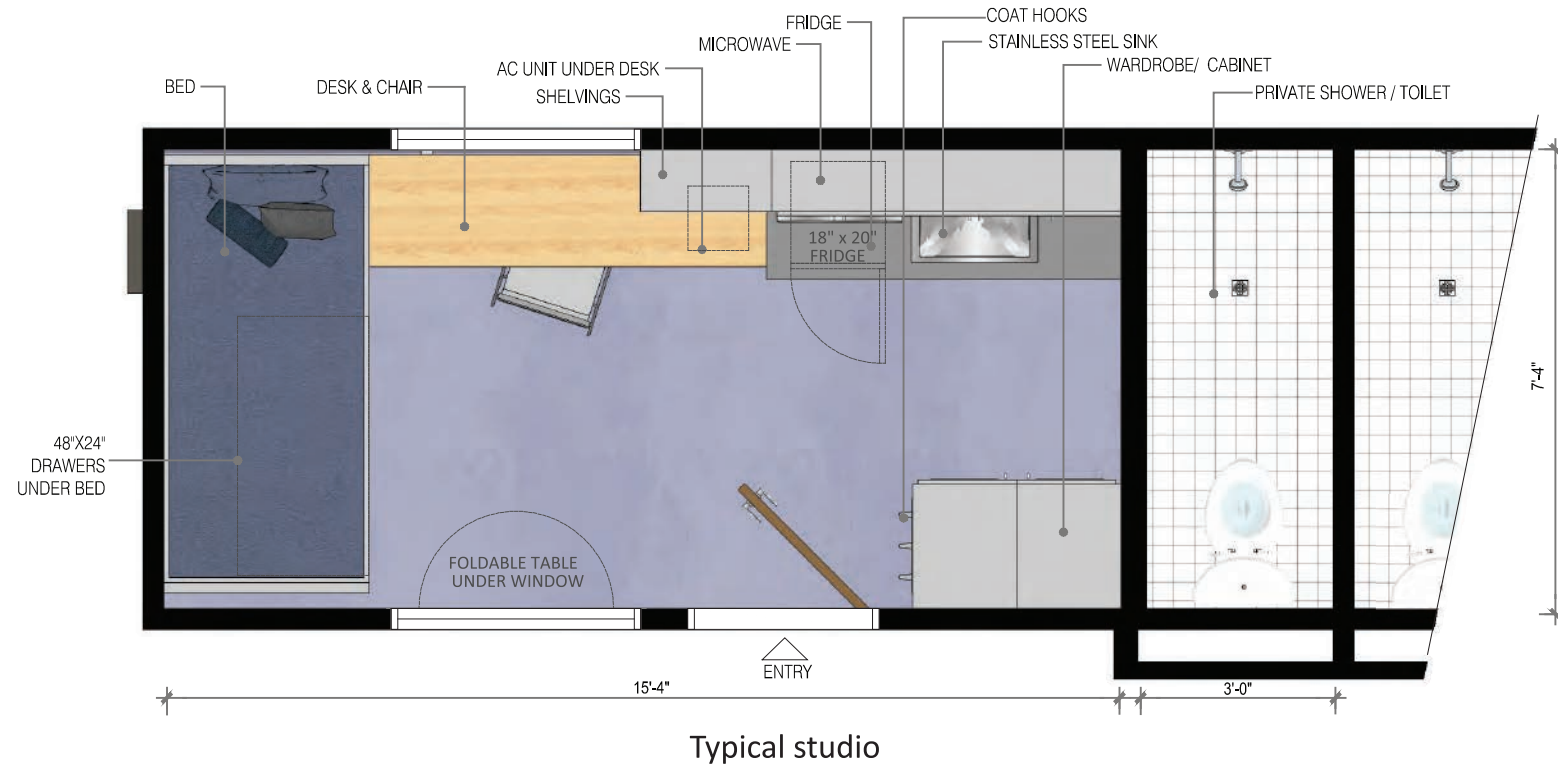


FAST & EFFECTIVE PERMANENT HOUSING FOR CITIES



- **Simple, 3 and 4-story modular construction.**
(Easy to design, quick to construct.)
- **Strong, steel, unibody modules.**
(Rodent proof, watertight, and relocatable.)
- **Flexible design for development of smaller lots.**
(5,000 - 6,000 SF.)
- **Private courtyard and outdoor community space.**
- **Exterior hallways on each floor.**
(Promotes social interaction; improves light and air to rooms; enhances security.)
- **Community kitchen, laundry, and social space. Managed by residents and staff.**
- **Private baths with showers & floor drains.**
(Reduces risk of flooding.)
- **Individual studios, furnished with bed, desk, chairs, fridge, microwave and wardrobe.**
(Can fit twin, full, queen or bunk bed.)
- **Individually controlled and sub-metered heat and ventilation in each room.**
- **Substantially less expensive than conventional apartment construction.**

CITYSPACE® Studios

Essential Housing

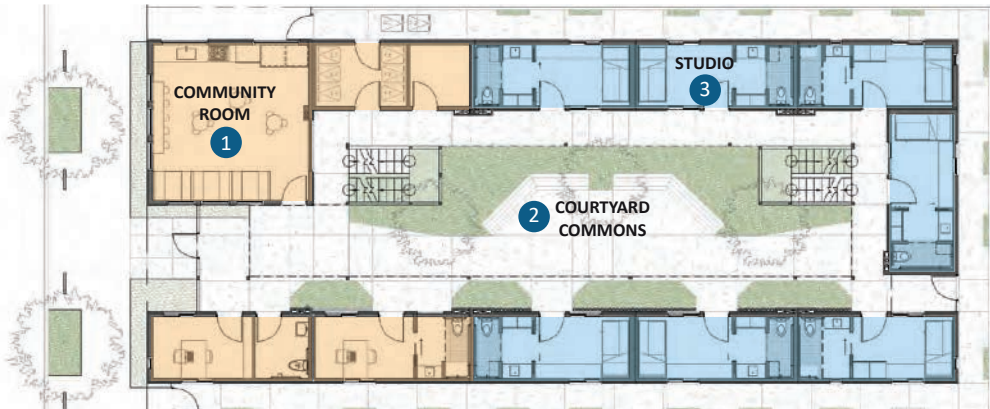


Street view



Secure entrance

Site plan

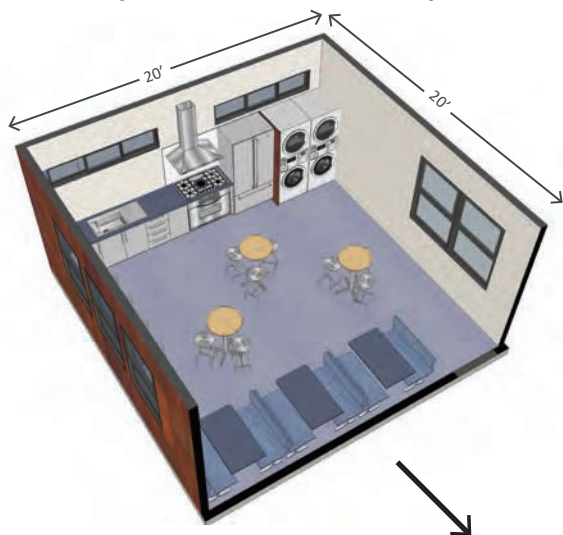


Interior view



2 Courtyard Commons

1 Community Room - Kitchen/Laundry/Services (400 SF)



Typical Project

5,150 SF lot (50'x103')*

Motel-style structure - 3 & 4-story pre-fab buildings
Construction time: 6 months

- 1 Community Room - Kitchen/Laundry/Services
- 2 Courtyard Commons
- 3 30 - 40 Furnished Studios

**Size of project may be increased or decreased depending on lot area*

3 Studio (175 SF)



Community Room - Kitchen/Laundry/Services



Studio