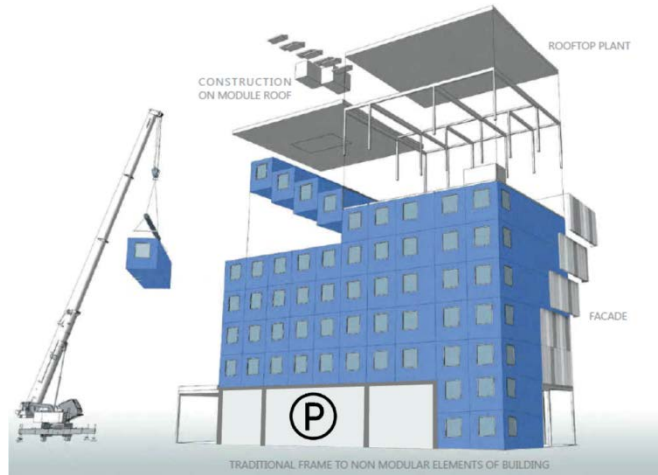




The MicroPAD®: A Means of Solving San Francisco’s Homeless Crisis

Today, San Francisco is two different cities. The first city enjoys unprecedented prosperity, with the highest household income of any major metropolitan area in the country. The second city is in a state of crisis, with an estimated 6,700 people living on its streets. These two realities create a social and moral conundrum: how can the community thrive when so many suffer?

The “Housing First” approach offers rapid provision of permanent housing for homeless populations and has been proven an effective remedy to chronic homelessness. But creating housing in a city where new development averages \$1,200 per square foot is no simple task. The MicroPAD® by Panoramic Interests can do just that, getting people off the streets and into high quality housing quickly and economically.



MicroPAD®: Built Twice As Fast

Conventionally built supportive housing takes one to two years to complete the approvals and permitting process, then at least eighteen months to build. MicroPAD® modules can be fabricated in four weeks, which can run concurrent with the permitting process. Installation on-site takes four to eight months. A MicroPAD® building can provide quality housing, in full compliance with all building codes, within nine months of city approval.

MicroPAD®: 40% Less than Conventional Construction

Conventionally built supportive housing cost the city \$400,000 per unit.¹ This high price results from three things: the city’s astronomical land values, costs associated with a complex approvals system and the high cost of construction in the local market.

MicroPAD® buildings can provide supportive housing at close to half that cost. This huge savings is achieved by prefabricating units. Off-site prefabrication mitigates the city’s high construction costs and limits the inefficiencies of on-site construction. MicroPAD® buildings can be built on, or in the airspaces above, unused and underutilized city-owned lots, significantly reducing land costs.

MicroPAD®: Ideal For Supportive Housing

MicroPAD® buildings are flexible and can be designed to accommodate a variety of spaces for supportive services. Self-contained units, with unibody steel construction, provide protection from flooding, fire, pests, odors and noise. All units have ample light and air circulation and include furniture, kitchenettes and bathrooms with showers. A MicroPAD® is more than a place to stay—a unit gives homeless people a place to live.

For more information or to arrange a tour of the MicroPAD® prototype, contact:

Michael Thomas
michael@panoramic.com
415.701.7006

¹ Fagan, K. “Solution to SF’s homeless problem starts with supportive housing.” *SF Chronicle*, June 29, 2016