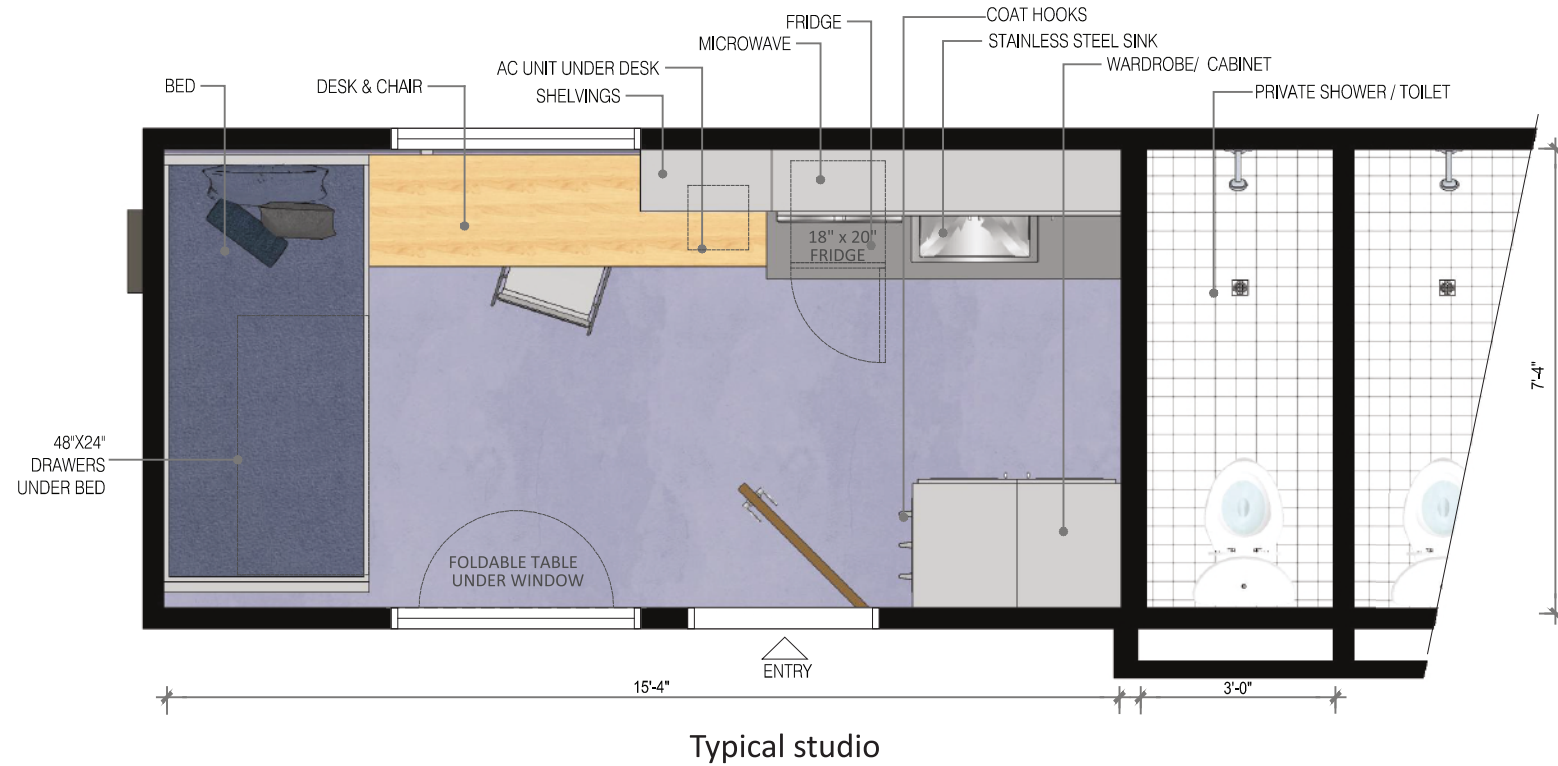


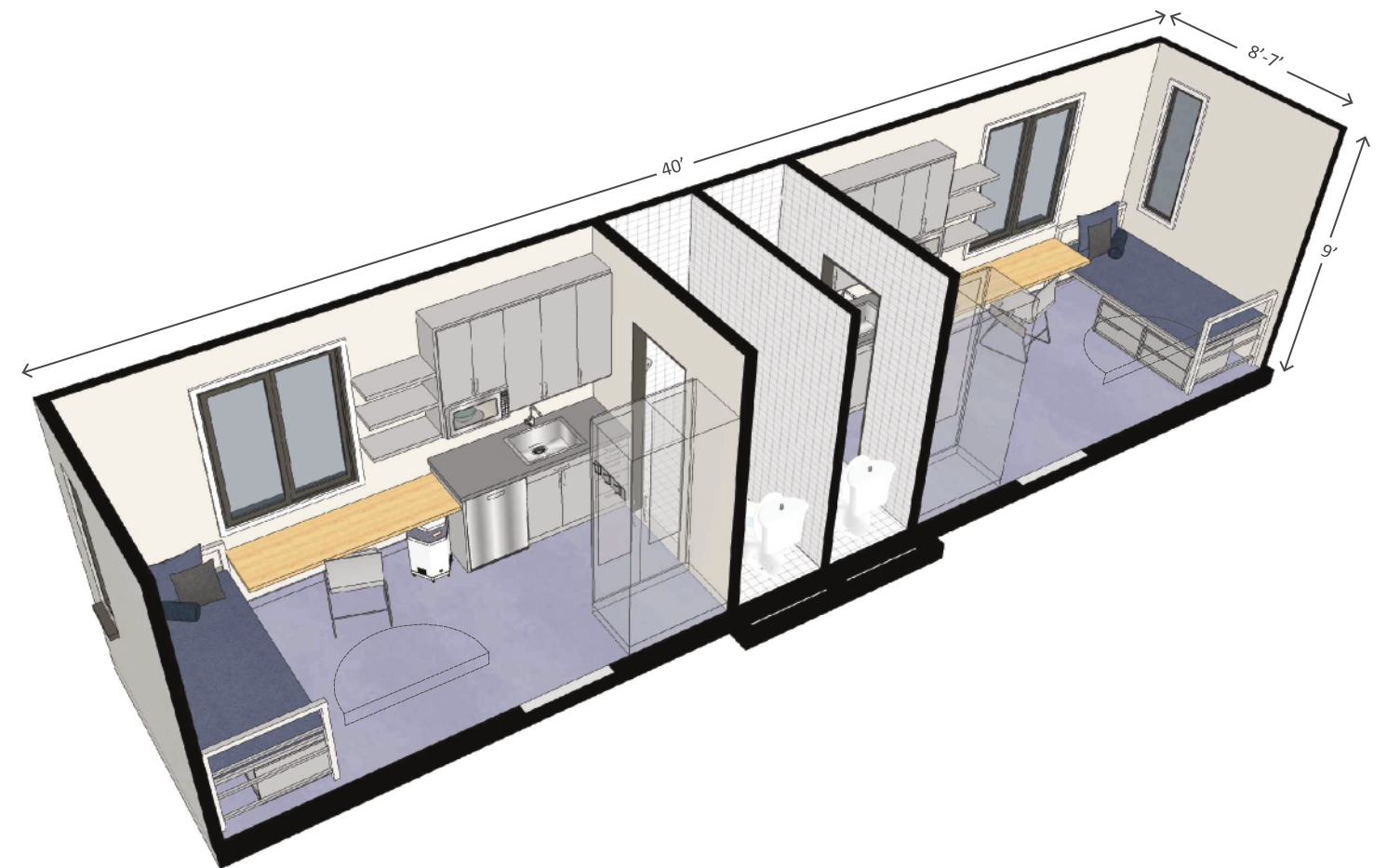
FAST & EFFECTIVE PERMANENT HOUSING FOR CITIES



- **Simple, 3 and 4-story modular construction**
(Easy to design, quick to construct)
- **Strong, steel, unibody modules**
(Rodent proof, watertight, and relocatable)
- **Flexible design for development of smaller lots**
(5,000 - 6,000 SF)
- **Private courtyard and outdoor community space**
- **Exterior hallways on each floor**
(Promotes social interaction; improves light and air to rooms; enhances security)
- **Community kitchen, laundry, and social space, managed by residents and staff**
- **Private baths with showers & floor drains**
(Reduces risk of flooding)
- **Individual studios, furnished with bed, desk, chairs, fridge, microwave and wardrobe**
(Can fit twin, full, queen or bunk bed)
- **Individually controlled and sub-metered heat and ventilation in each room**
- **Substantially less expensive than conventional apartment construction**

CITYSPACE® Studios

Essential Housing



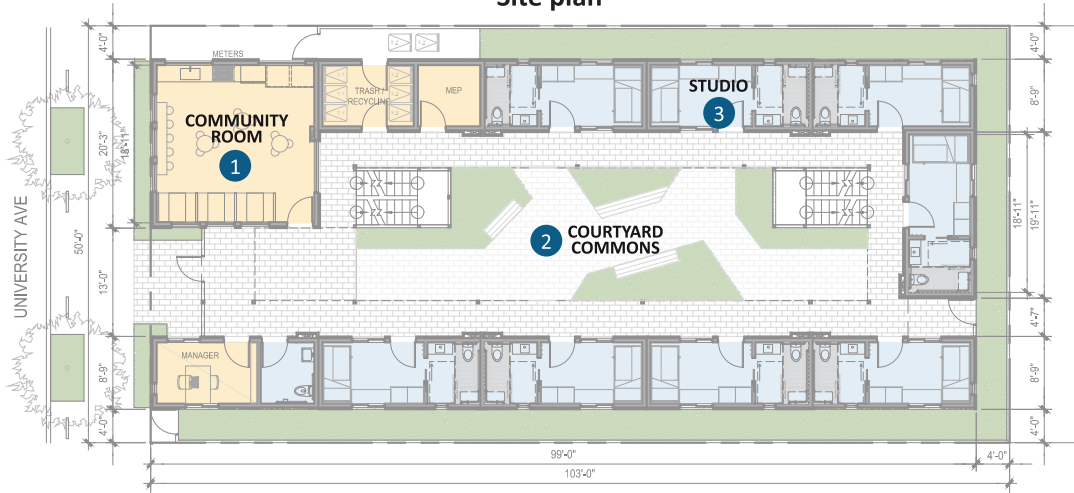
CITYSPACE More in Less®

Street view



Secure entrance

Site plan

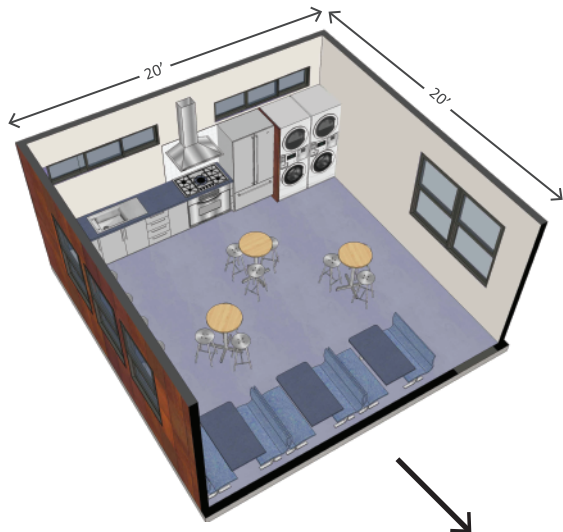


Interior view



2 Courtyard Commons

1 Community Room - Kitchen/Laundry/Services (400 SF)



Typical Project

5,150 SF lot (50'x103')*

Motel-style structure - 3 & 4-story pre-fab buildings
Construction time: 5 months

- 1 Community Room - Kitchen/Laundry/Services
- 2 Courtyard Commons
- 3 30 - 40 Furnished Studios

**Size of project may be increased or decreased depending on lot area*

3 Studio (175 SF)



Community Room - Kitchen/Laundry/Services



Studio